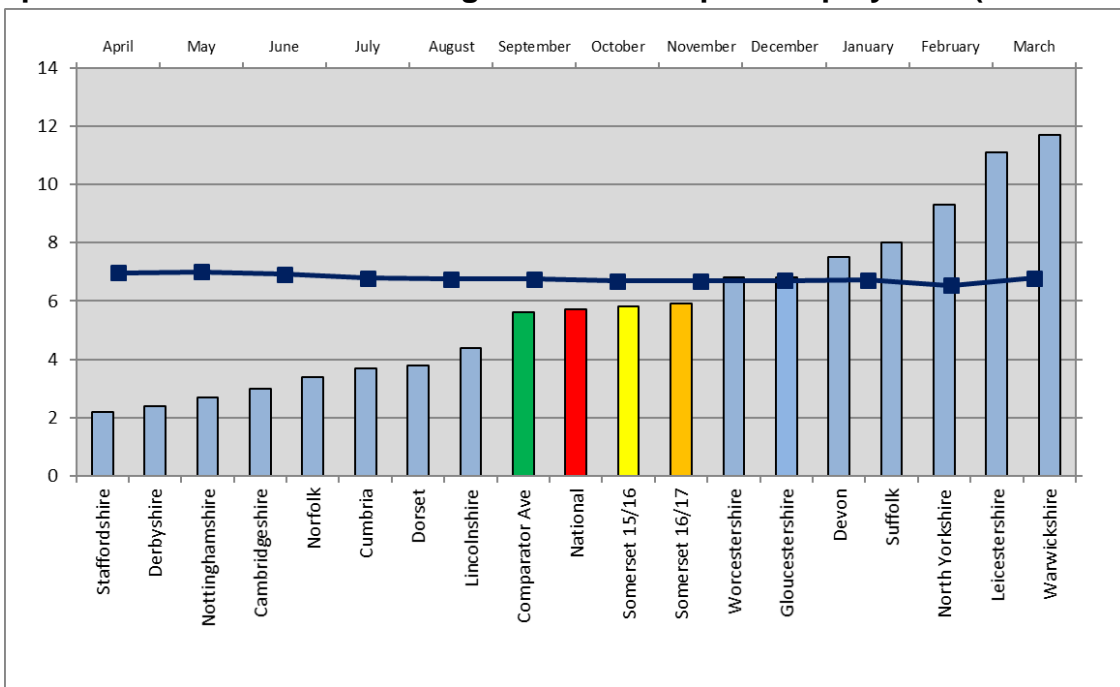




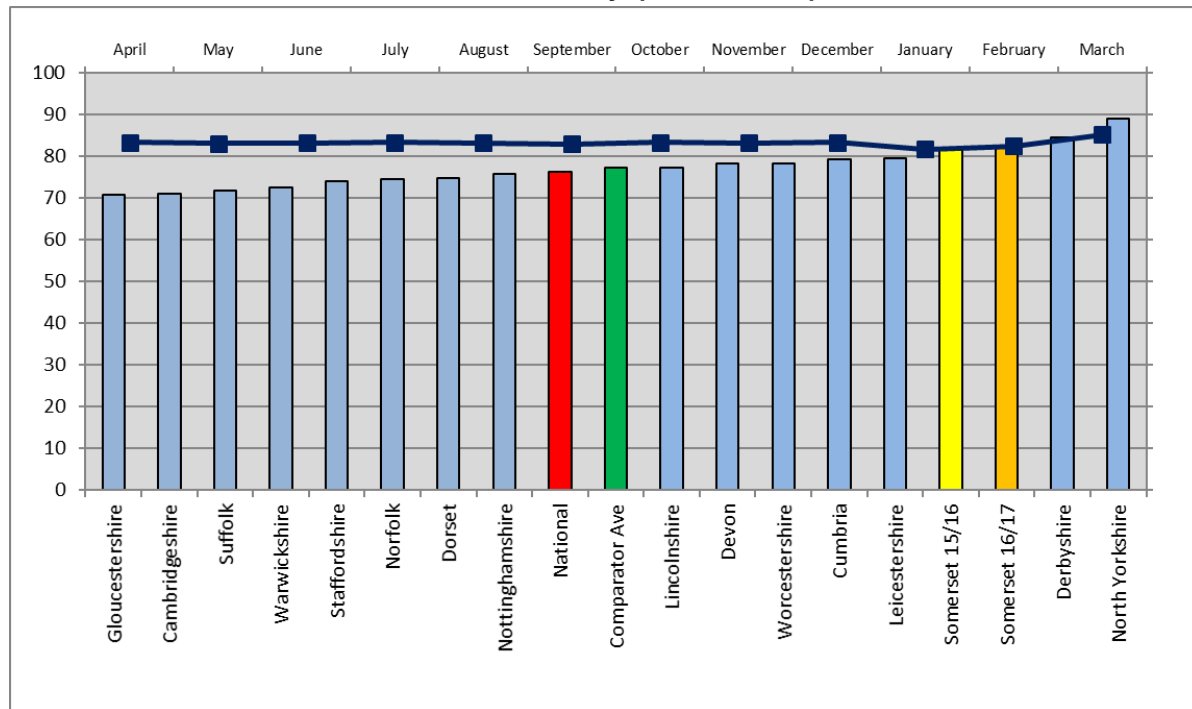
**Commentary:** Higher is better. Somerset's performance is good. In 2016/17 it was above both the national average and the comparator group average and showed an improvement on 2015/16. Performance in 2017/18 has dipped slightly from last year but remains above the 16/17 national average.

**C. Proportion of adults with learning disabilities in paid employment (ASCOF 1E):**



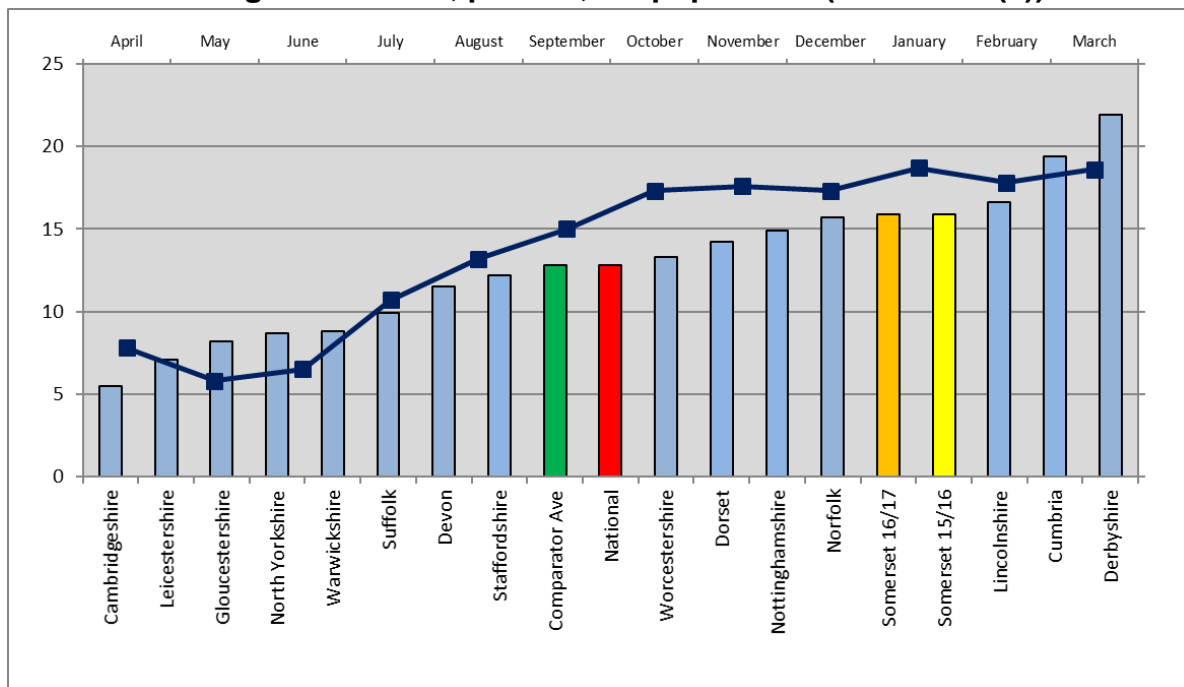
**Commentary:** Higher is better. Somerset's performance in 2016/17 was slightly above both the national average and the average for the comparator group. 2017/18 performance shows further slight improvement.

**D. Proportion of adults with learning disabilities who live in their own home or with their family (ASCOF 1G):**



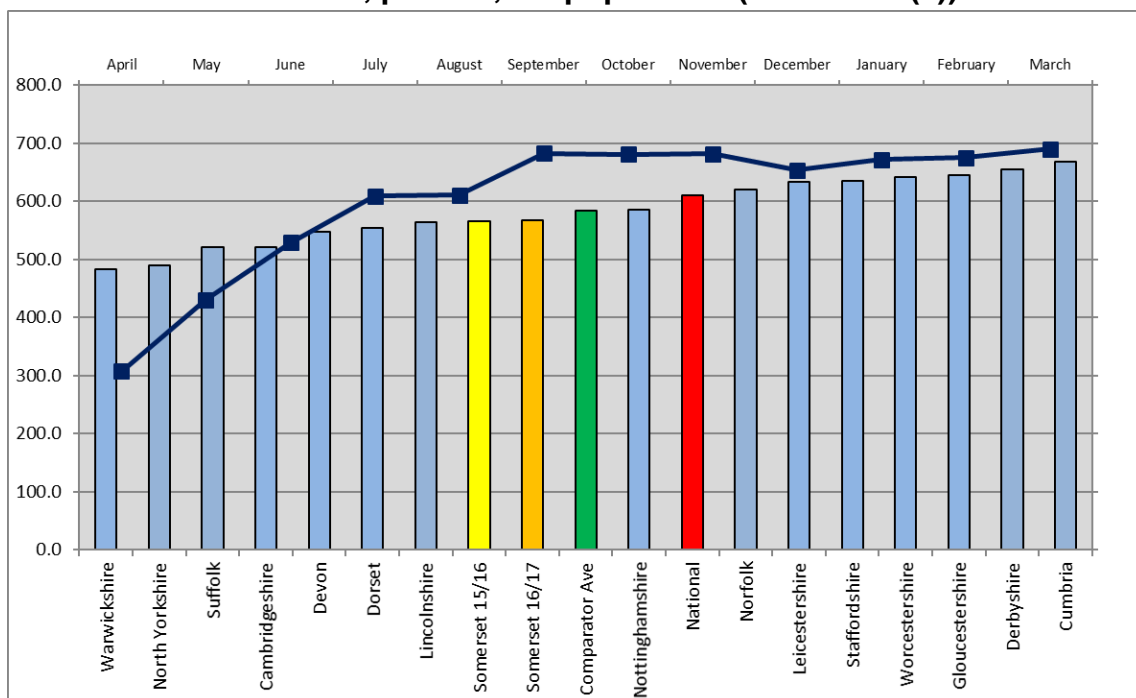
**Commentary:** Higher is better. Somerset's performance is good and is above both the national and comparator group averages. 2017/18 performance is slightly above the 2016/17 outturn.

**E. Permanent admissions of younger adults (aged 18 to 64) to residential and nursing care homes, per 100,000 population (ASCOF 2A(1)):**



**Commentary:** Lower is better. Somerset's performance in 2015/16 was poor. Placement numbers were above the national and comparator group averages and Somerset was one of the highest placing councils in the comparator group. Performance in 2016/17 was in line with 2015/16 performance. Draft 2017/18 outturn performance shows an increase from the 2016/17 outturn.

**F. Permanent admissions of older people (aged 65+) to residential and nursing care homes, per 100,000 population (ASCOF 2A(2)):**



**Commentary:** Lower is better. Somerset's performance in 2015/16 was better than the national and comparator group averages. Performance in 2016/17 showed a very slight deterioration compared to 2015/16. The draft outturn for 2017/18 shows a further slight deterioration in performance.